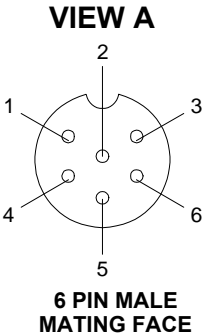
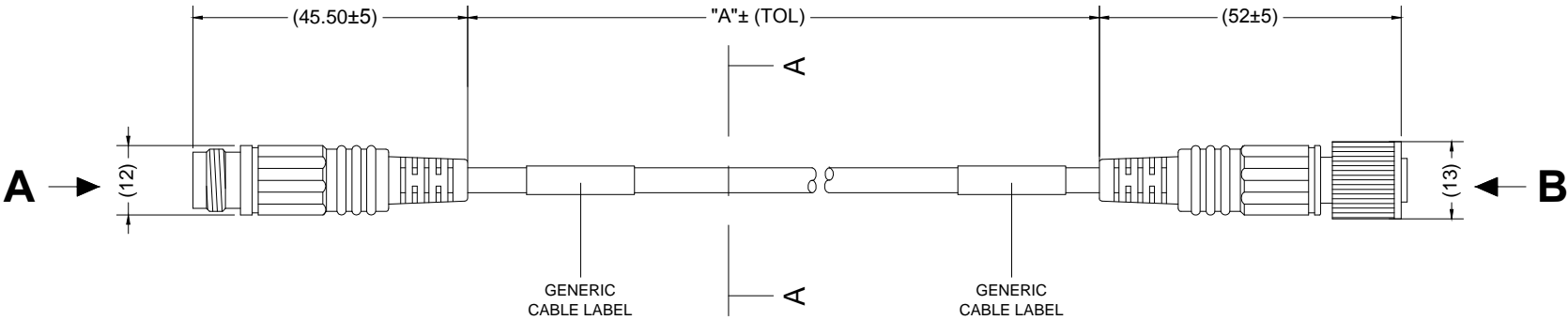
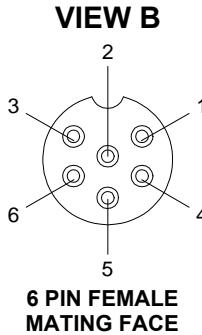
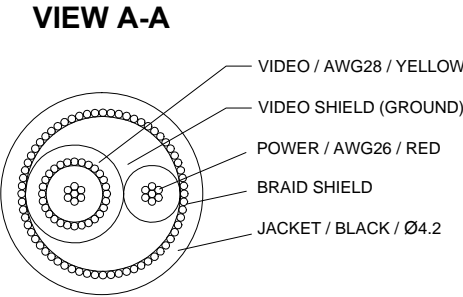


MODEL NO.	PART NO.	LENGTH (A)	TOLERANCE (TOL)
BN360-L-120	4493	20M	-200/+800mm
BN360-L-115	4495	15M	-200/+800mm
BN360-L-110	4496	10M	-100/+600mm
BN360-L-105	4498	5M	-100/+400mm
BN360-L-1025	4499	2.5M	-100/+200mm

Revision Notes.				
DRAFT-01				
APA: -	Drawn: P.MISSEN	Checked:-	Approved:-	Date: 23/10/13



PIN #	WIRE COLOUR	DESCRIPTION
1	N/A	N/C
2	RED	5.2V DC
3	YELLOW	VIDEO
4	N/A	N/C
5	N/A	N/C
6	BLACK	GND




PIN #	WIRE COLOUR	DESCRIPTION
1	N/C	N/A
2	RED	5.2V DC
3	YELLOW	VIDEO
4	N/C	N/A
5	N/C	N/A
6	BLACK	GND

- NOTES
1. FOR GENERIC CABLE LABEL REFER TO LATEST REVISION OF DRAWING BE-002644-XX-13
  2. INTERNAL CABLES SHOULD BE ONE CONTINUOUS LENGTH BETWEEN CONNECTORS
  3. CABLE PROVIDED IN A SUITABLE ADEQUATELY SIZED BAG

**PROPRIETARY NOTICE**  
THIS DESIGN AND TECHNICAL INFORMATION APPEARING ON THIS DRAWING IS THE PROPERTY OF BRIGADE ELECTRONICS, AND IS DISCLOSED IN CONFIDENCE. IT IS NOT TO BE COPIED, REPRODUCED, REVEALED TO OR EXPROPRIATED BY OTHERS, EITHER IN WHOLE OR IN PART WITHOUT THE EXPRESS WRITTEN CONSENT OF BRIGADE ELECTRONICS.

**BRIGADE®**  
www.brigade-electronics.com

Assembly PI Approval YJ LEE 13/11/13	Approved by G.PLITH	Checked by R.BATES	Drawn by M.POTTER
Angle of Projection 	Units mm	Scale N/A	Released 14/11/13
Third Angle	Status Released	BN360-LXXX	
	Part No SEE TABLE	BE-002590-00-13	
Assembly Ref -			